

2024 UWSOM SPRING STUDENT SURVEY

1 WHAT IS THIS SURVEY?



The survey consists of questions designed to understand student experiences, as well as Liaison Committee on Medical Education (LCME) required questions focusing on the cited areas: 1. Community of Scholars/Research Opportunities, 2. Student Study & Relaxation Spaces, and 3. Healthcare Access during the Clerkship Phase.

2 WHY SHOULD I FILL OUT THIS SURVEY?



Your feedback is crucial! Help us enhance your educational experience and drive improvements across our medical program. By sharing your insights, you directly contribute to identifying and addressing key issues.

3 WHEN CAN I FILL OUT THE SURVEY?



Your survey will be available:

- MS 1: May 13 to June 14
- MS 2: June 23 to July 8
- MS 3: June 23 to July 8
- MS 4: May 20 to May 24

4 HOW DO YOU USE MY FEEDBACK AND DATA?



Your feedback is thoroughly analyzed and shared across all units and services within the school to ensure comprehensive improvements. Additionally, we partner units on Continuous Quality Improvement (CQI) efforts.

5 DO YOU HAVE EXAMPLES OF CQI?

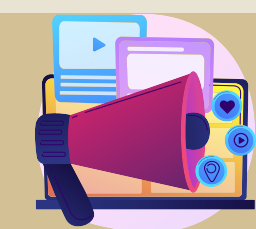


UWSOM has actively improved our educational programs through various CQI initiatives. Details about ongoing efforts and examples are highlighted in the CQI Spotlight Series, with current initiatives compiled and shared on the next page.

6 IS THERE ANY INCENTIVE?



The school aims for a response rate above 80%. Once each campus reaches 60% and 80% response rates, gift cards valued at \$10 will be proportionally distributed among campuses, and winners will be drawn randomly. More info available on the survey invitation email.



Want to know more about the ongoing efforts in CQI? Scan the below QR code and Check out the CQI Spotlight Series.



Want to know more about the next 2026 LCME Accreditation Visit? Scan the below QR code and visit the EQI webpage.



If you have questions regarding the survey, please email eqi@uw.edu



YOU SAID, WE DID...

THE ONGOING EFFORTS TO IMPROVE
UWSOM EDUCATION PROGRAM!



WHAT WE WORKED SO FAR

1. Scholarly Opportunities:

- The Triple I team expanded the III info session to include more details about the process.
- Offers regular office hours in December.

2. Coordination & Integration:

- More hours has been added to the Integration weeks starting with E22.

3. Career Advising Services:

- Developed career planning milestones to support students with key planning tasks from MSI to Match.
- Created 3 new career planning videos on extra-curricular and navigating research.

4. Academic Support Services:

- Seattle: Hired 0.5FTE learning specialist and anticipate the effort increase to 1 FTE in 2024.
- Spokane: hired a new full-time learning specialist.

5. Access to Healthcare During Clerkship:

- Policy Changes: Attendance & Absentee Policy and Policy on Student Access to Anticipated Healthcare
- Centralization of Healthcare Info for Student Access

WHAT WE ARE CURRENTLY WORKING ON

1. Enhance the Learning Environment:

- Increase student awareness of mistreatment policies and reporting procedures by providing reference cards (with QR codes) to students.
- Broadened the scope of the IROC committee meetings to address concerns both from the Foundations and Clinical Phases.

2. Increase Responsiveness to Student Feedback on Courses:

- Evaluations are shared with clerkships.
- Curriculum leadership sends communications including newsletters with updates about the curriculum.

3. Improve the Assessment During Clerkships:

- School moved to a weighted percentage system of clinical performance and subject exam grade for grading in Spring 2023.
- The Clinical Assessment Structure moves to a competency based framework with Pass/Fail grading with a goal to implement in Spring 2025.

KEEP AN EYE ON THE CQI SPOTLIGHT SERIES FOR ONGOING
UPDATES ABOUT HOW WE'RE USING YOUR FEEDBACK TO MAKE
REAL CHANGES. WE'RE COMMITTED TO KEEPING YOU INFORMED

QUESTIONS?
EQI@UW.EDU

