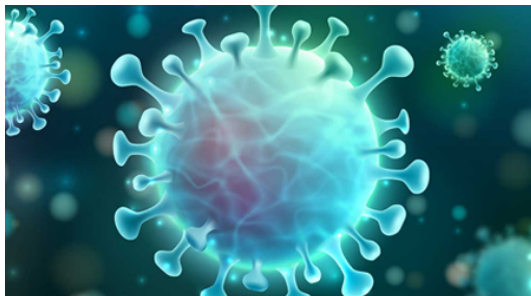


Weekly Information for UW Medical Students

Thursday, May 27, 2021



COVID-Related Information



[More COVID Information](#)

Do You Have Concerns About COVID-19 Symptoms or a Possible Exposure?

If you are experiencing COVID-19 symptoms, or if you have encountered a possible or known exposure, please follow these COVID-19 Exposure/Symptoms/Diagnosis procedures:

Students on clinical rotations:

<https://education.uwmedicine.org/covid-19-exposure-clinical/>.

Foundations students:

<https://education.uwmedicine.org/covid-19-exposure-foundations/>.

Questions? Contact Dr. Tolbert:

adminsa@uw.edu.



UW Medicine Town Hall Meeting

Please join us for the next UW Medicine Town Hall on Friday, May 28, at 3 p.m. PDT.

Zoom link: <https://uw-phi.zoom.us/j/887116941>.

[Watch Recording](#) | [Zoom Link](#) | [Submit Questions](#)

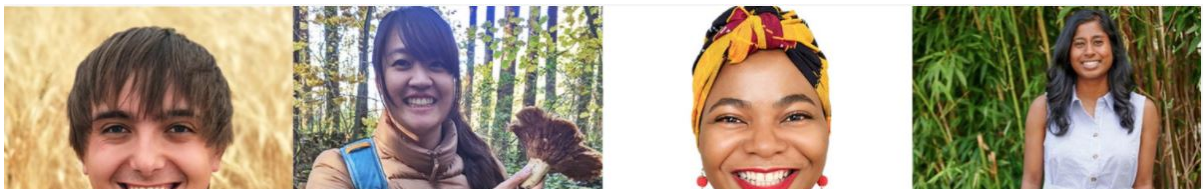
Information for All Students



Remembering George Floyd

On May 25, 2020, George Floyd was murdered in Minneapolis, MN. The heinous manner in which he died, captured through video, sparked outrage across our country as we each witnessed the callous brutality of anti-Black racism; the veil of hearsay lifted. Over this past year, UW Medicine has committed to more fervently addressing racism in all forms in our classrooms, clinics, labs and hospitals. We will continue to make decisions to ensure a just, equitable and inclusive future for everyone.

Read [this message](#) from Dr. Paul Ramsey and Dr. Paula Houston, posted to UW Medicine's The Huddle, on the anniversary of Mr. Floyd's death. UW President Ana Mari Cauce also posted her thoughts and intentions on her [blog](#).





Congratulations to our UW Husky 100s!

Please join us in congratulating these eight students who were recognized among the UW 2021 Husky 100! Clockwise from top left: **William French** (MD: Medicine, Montana), **Chiann-Ling Yeh** (PhD: Genome Sciences, Seattle), **Naomi Nkinsi** (MD: Medicine, MPH: Global Health, Seattle), **Sangeetha Thevuthasan** (MD: Medicine, Seattle), **Beth Halsne** (MS: Mechanical Engineering, PhD: Rehabilitation Science, Seattle), **Eric Scott Nealy** (PhD: Pathology, Seattle), **Devin Gaskins** (MD: Medicine, Idaho), and **Thamanna Nishath** (MD: Medicine, Seattle).

To read more about our Husky eight and the other 92 students that round out the 100, visit the [Husky 100 web page](#).

Prometric

If you have been contacted by Prometric to reschedule your test date, please share that with Rachel Palfini at somlearn@uw.edu.

UWSOM Accreditation Status

In response to students' requests for more information about UWSOM's accreditation status, we developed a new accreditation website. Throughout 2021, the accreditation website will be updated monthly to provide an executive summary of each of the twelve accreditation standards and UWSOM's compliance with those standards. The executive summary for Standard 5 on Educational Resources & Infrastructure is [now available here](#).

We encourage you to take a look and learn more about accreditation at allopathic medical schools.

Financial Aid Reminders

Complete the “[Revision Request for Change in Financial Situation – Student](#)” by June 30, 2021

All students who reported an income on their FAFSA that they will not have in the 2021-22 academic year must complete the form: “[Revision Request for Change in Financial Situation – Student](#).” Submitting this form will make you more likely to be eligible for future federal government relief money due to the COVID-19 pandemic. The Revision Request form will not be fully processed until August but we're encouraging all students to submit by June 30 for priority processing. You must login with your UW Net ID to complete the form.

Interest Rate Increases: the federal government has announced next year's interest rates and **they have increased for loans disbursed after July 1, 2021. If you have not taken out your full amount for 2020-21 and you would like to take out the full amount. [you must email somfao@uw.edu](mailto:somfao@uw.edu) by June 1.**

Requests made after June 1 are not guaranteed to be processed in time.

- 5.28% for Unsub Stafford
- 6.28% for Grad Plus

Career Advising CV Group Review Sessions

Sign up in CAS for a CV Group Review Session on Fridays from 12-12:30 p.m. PDT. We currently have lots of availability throughout June. A Career Advisor will review your CV in advance and in the group session, address common themes for improvement and answer your questions. Please be sure to watch the instructional videos and review the templates and checklist on this webpage in advance.

Learning Environment Corner

This week are highlighting and recognizing the activity of Learning Environment Committee student members and student partners over the past year, in their own words, and specifically how student-initiated interventions are improving the learning environment. We greatly appreciate their efforts!

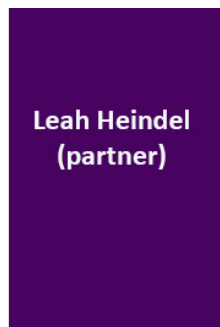
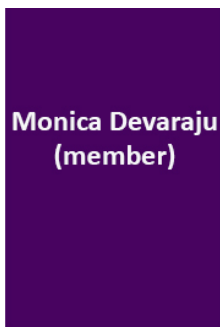
A Message from our Student Members and Partners

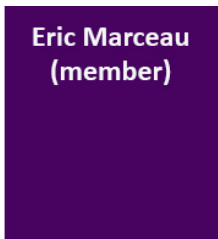
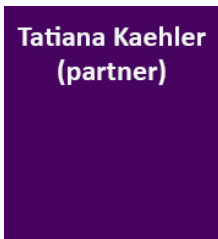
The WWAMI Program offers a unique opportunity for students to train in a variety of clinical settings. Greater data about clerkship sites and communities helps all students, and particularly those with marginalized identities, in ranking their preferred sites by identifying clinical sites with community and support.

We have developed and implemented a number of changes to the clerkship scheduling process to help ensure that all students have the opportunity to learn in an environment in which they feel comfortable, safe, and supported. These include a checkbox on the clerkship survey to indicate a student’s concern about a specific site location, as well as a “site report card” that includes demographic and community information as well as a history of student respect scores.

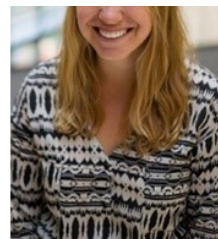
We are still working on a number of other improvements including continuing to improve site information available to students and implementing longitudinal bystander training. The opportunity to train at sites across five states is valuable but should not be at the expense of students’ safety or learning. We are dedicated to working with the administration to make the WWAMI program valuable and accessible to all students.

The Learning Environment Committee student members and student partners include:





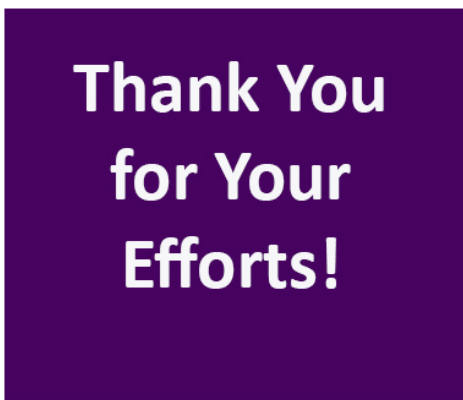
Nathan McLaughlin (partner)



Zannah Herridge-Meyer (member)



Emma Roberts (partner)



To learn more about the Learning Environment Committee, please [click here](#) to view its dedicated pages on the Learning Environment website.

Benefis Foundation Scholarship for Medical Students

- Applications are due June 15, 2021 at 11:59 p.m. PDT
- Amount: Up to \$5,000/year
- Requirement: Applicants must be full-time students
- For more information, [visit this page](#) on the Benefis Foundation website.

As a reminder, UWSOM Financial Aid posts current outside scholarship opportunities on [this webpage](#).

In case you missed it

[Here is a link to last week's student newsletter \(5-20-21\)](#). That issue included the following for all students:

- Congratulations Graduates & POHC
- Reminder for Seattle Students
- Specialty Decision Making as Residency Applications Approach: MS4 Panel Recording
- UWSOM Scholarship Applications are Open June 1 – June 30
- New Student Affairs Appointment Scheduling System Now Available
- AAMC Student Loan Repayment Webinar: Finding Your Best Repayment Plan

[Student Newsletter Archive](#)

Updates for each class:

[MS1s](#)

[MS2s](#)

[MS3s](#)

[MS4s](#)

[Upcoming Dates and Deadlines](#)

UW Medicine

UW SCHOOL
OF MEDICINE

University of Washington School of Medicine
1959 NE Pacific St, Seattle, WA 98195