



Washington State  
Hospital Association



## Critical Access Hospitals in the WWAMI Region

---

Jacqueline Barton True, Director, Rural Health Programs  
August 29, 2017

## Overview

- Critical Access Hospitals (CAHs) in the WWAMI region
- Importance and challenges of rural health care
- CAHs and the Affordable Care Act
- Innovation
- Workforce

# Critical Access Hospitals in WWAMI

Washington:

39

Wyoming:

16

Alaska:

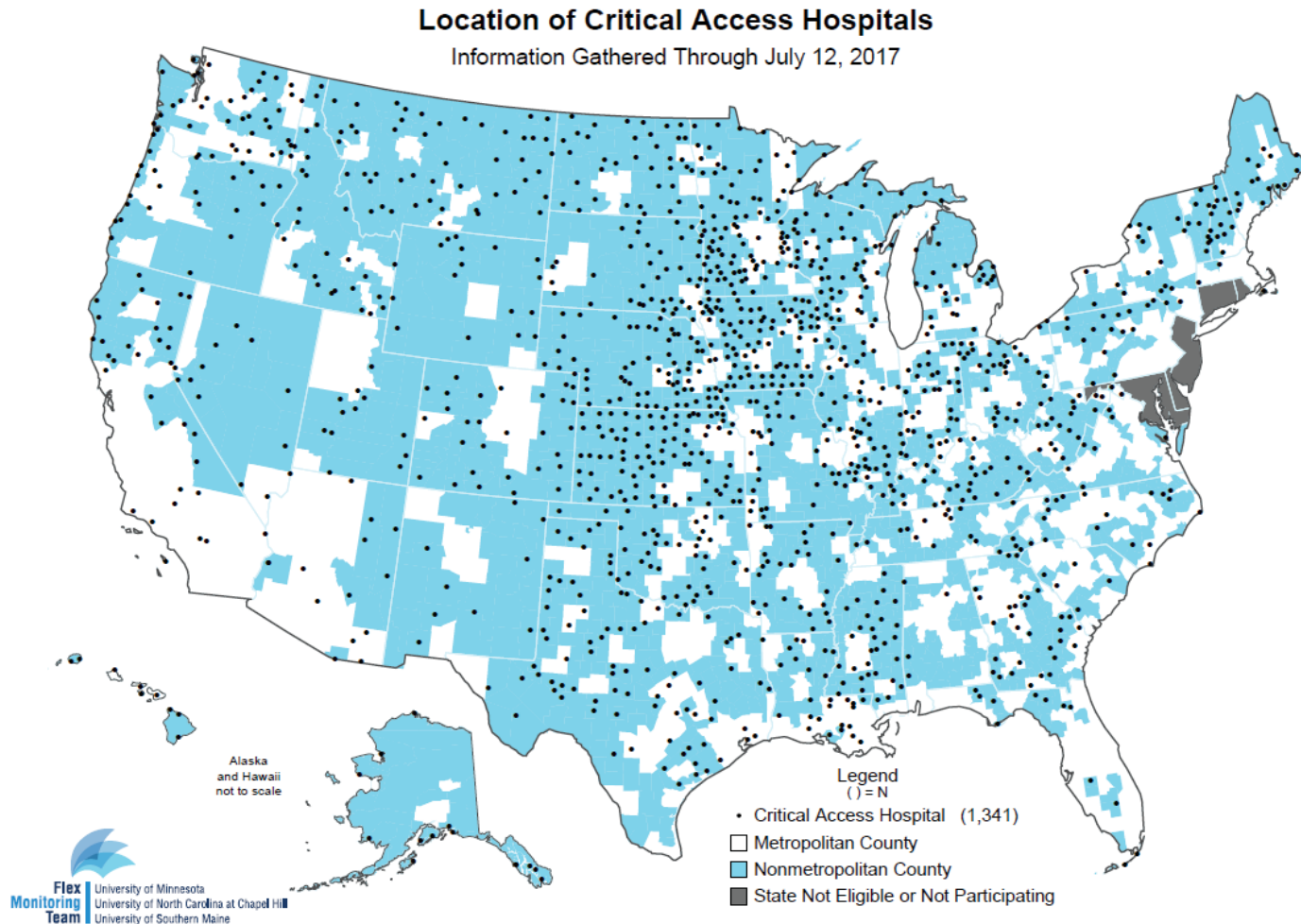
14

Montana:

48

Idaho:

27



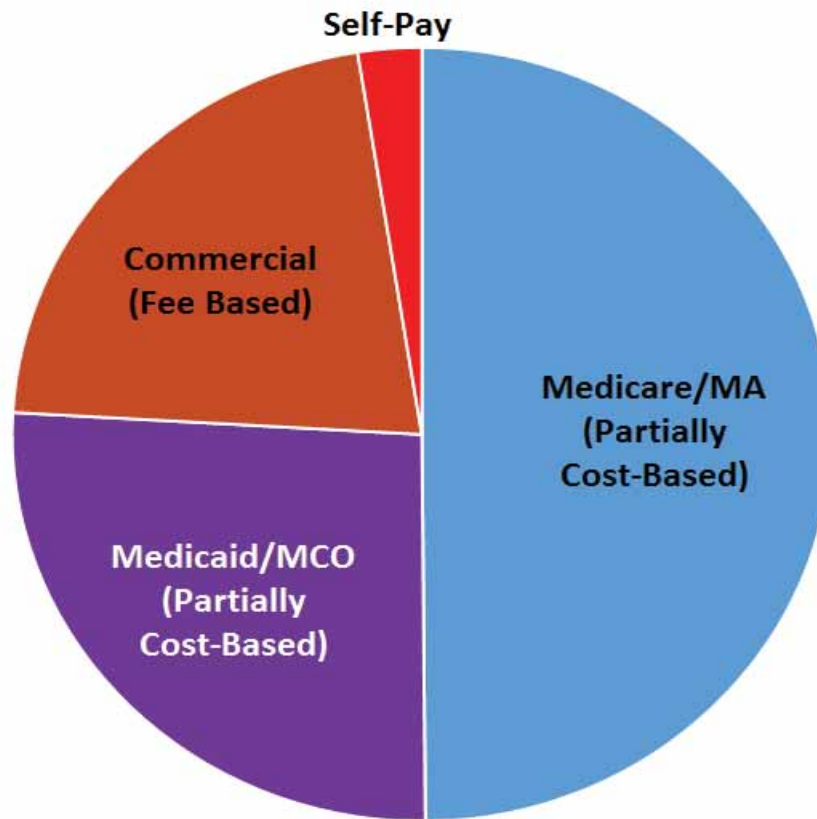
## Importance and Challenges of Rural Health Care

- Urban vs rural
- Payer mix and volume
- Hospital closures
- Demographic and delivery shifts
- Often the only source for a broad range of services
- Often the largest employer
- Complex and interconnected payment

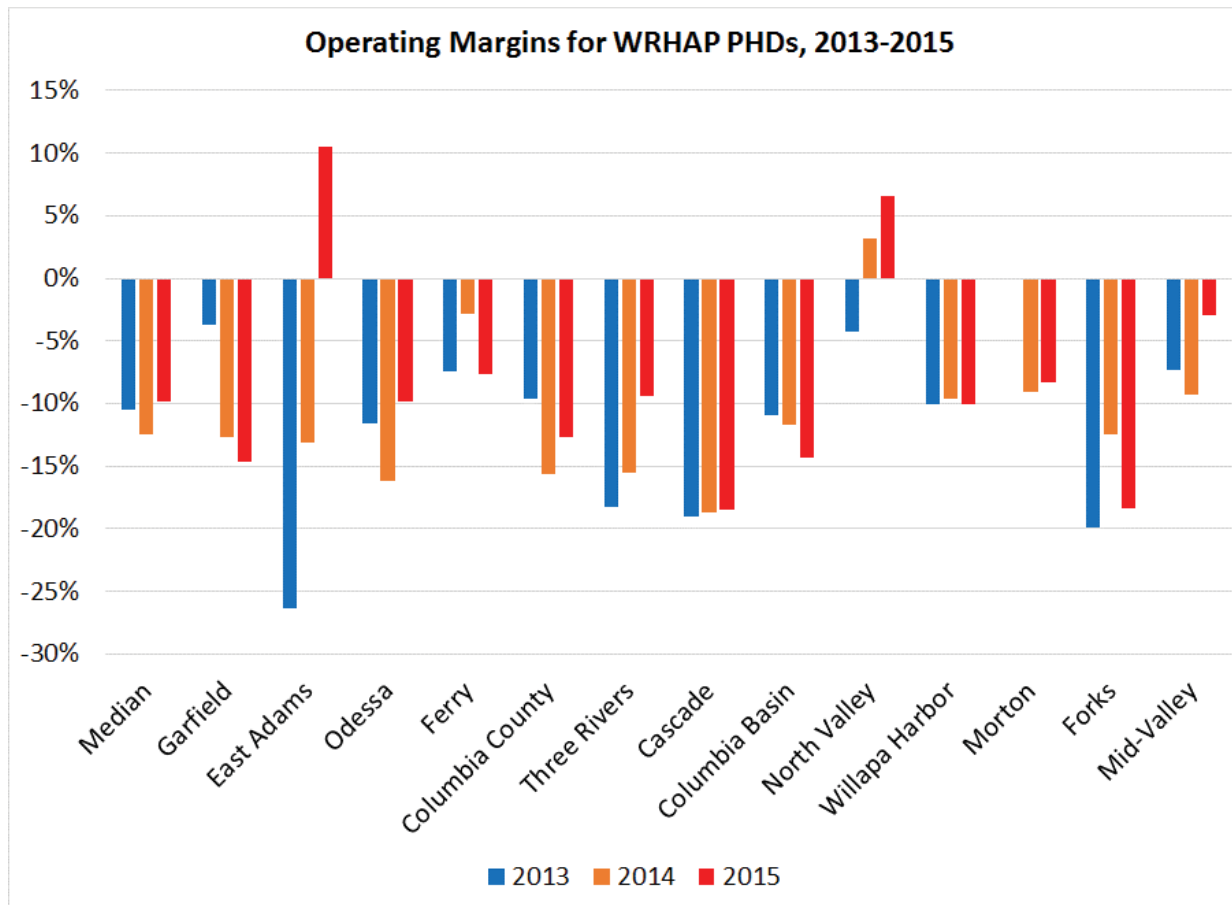


# Government Payers Dominate

Payer Mix in WRHAP Hospitals 2015



# Financially Vulnerable



## Rural Hospitals and the Affordable Care Act

- ACA largely beneficial for hospitals in expansion states
- Reduction in uncompensated care
- Expansion of 340B



# OVERALL UNCOMPENSATED CARE TREND



## Innovation

- Small hospitals are looking for a new model
- Frontier Health System Model (FCHIP)
- Washington Rural Health Access Preservation pilot (WRHAP)



## New Partnerships

- Increasing consolidation in the market
- Trend looks different in rural



- Hub & spoke with larger centers
- New types of partnerships
  - Across rural facilities (district model)
  - CAH/FQHC partnership

# Workforce

- Recruitment and retention
- Implications of telehealth
- Changing role of the rural clinician



# Questions?

[jacquelineb@wsha.org](mailto:jacquelineb@wsha.org)