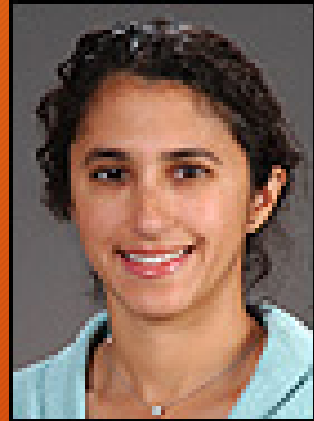


OBGYN Clerkship Program

Jessica Sidhu, Clerkship Administrator

WRITE September Faculty Development
September 14, 2018

Faculty and Staff



Vicki Mendiratta, MD
UWMC
Clerkship Director



Jessica Sidhu, MPH
UWMC
Clerkship Administrator

Overview of Clerkship

- 6 Week Clerkship
- Course Description
 - Introductory experience in the provision of comprehensive medical care and counseling services to adult and adolescent female patients.
- Settings: Over 45 Sites
 - University Hospital
 - Community Hospitals
 - Physicians Offices
 - Public Health Clinics
 - Inpatient
 - Outpatient

WWAMI Obstetrics and Gynecology Sites



Note: Map not to scale

Revised 8/2018

★ Traditional Clerkship
L LIC
W WRITE

WRITE Courses

- 8 Sites Throughout WWAMI Region
 - New Sites:
 - Soldotna, AK
 - Anaconda, MT
 - WRITE Sites Converted to Traditional Sites
 - Wasilla, AK



Clerkship Objectives

5 Clerkship Goals

1. Perform directed histories and physicals, and document this by written workups.
2. Perform complete breast and pelvic exams on appropriate patients.
3. Acquire knowledge about OBGYN conditions and diseases.
4. Demonstrate interpersonal communications skills.
5. Demonstrate appropriate professional characteristics.



Clerkship Activities

- Office
 - Interview & examine patients (pelvic & breast exams, pap smears)
 - Observe or assist with office procedures (colposcopy, endometrial biopsy, D&C)
- OR
 - Participate in gynecological surgeries and cesarean sections
- Labor & Delivery
 - Evaluate patients in triage
 - Observe, assist, or perform vaginal & cesarean deliveries
- Inpatient
 - Round on patients & participate in their hospitalization

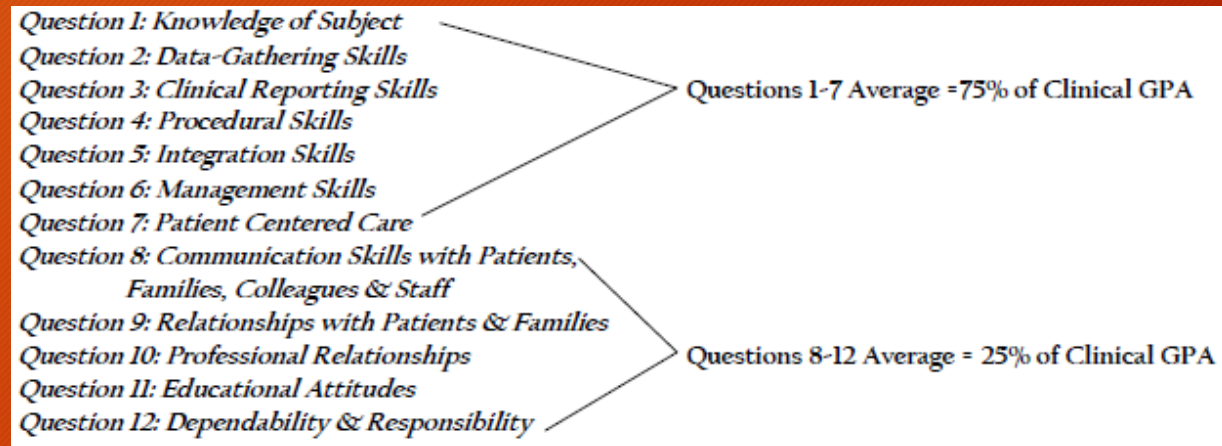
Clerkship Activities (continued)

- Lectures (on-line or in traditional lecture setting)
- Grand rounds
- Conferences
- 1 Required patient history & physical write-ups
- 20 Minute oral presentation
- Pelvic & Breast Exam CEx
- Meeting with Preceptors (Evaluation of Student Performance)

Student Evaluation

Clinical GPA

- Clinic preceptors, attendings, other faculty, and residents document their observations of student's clinical performance throughout the rotation
 - Electronic survey comprised of 12 questions
 - Numerical response (1-5)
 - Written summary of performance
 - Recommended clinical grade



Student Evaluation

NBME Exam

- Approximately 110 questions (100 scored, 10 “test questions”)
- Mean score 70 standard deviation of 8
- Score of 80 is required for Honors
- Score of 55 to pass the clerkship



Student Evaluation

Final Evaluations are comprised of two components:

- OB/GYN (60%)
- Family Medicine (40%)

Grading Rubric

| EXAM GRADE and ADJUSTMENT | | | ADJUSTED GPA | FINAL GRADE |
|---------------------------|-----------------------|---|---------------|-------------|
| 86% and above | +0.15 to clinical GPA | <i>Adjusted GPA is the Sum of Clinical GPA and Adjustment from Exam Grade</i> | 4.5 or higher | Honors* |
| 66%-85% | No Adjustment | | 4.10 – 4.49 | High Pass |
| 65% and below | -0.15 to clinical GPA | | 3.0 – 4.14 | Pass |
| Less than 55% | Exam Fail | | Less than 3.0 | Fail |

*Student must score 80% or above to be eligible for Honors.